

Yeonsu-gu Tourist Guide Map



History of Yeonsu-gu

Today, it is no coincidence that Incheon has been able to become an international maritime city in Northeast Asia. It is because the continuous efforts of our ancestors for active maritime exchanges with China more than 1,600 years ago and the precious historical resource of Neungheodae became the foundation. Baekje Sasin-gil sheds light on the history of our Yeonsu-gu and proves its value to countless people.



Woninjae

1

Woninjae, Incheon Metropolitan City's Cultural Heritage #5, is a house to perform ancestral rites located in front of the tomb of Lee Heogyem, the founder of Incheon Lee Family. Originally located at the edge of the hill leading to the Red Cross Hospital in Yeonsu-dong, it was relocated and restored to its current location due to an urban development project.

322 Gyeongwon-daero, Yeonsu-gu 032)821-1230



Heungryunsa Temple

2

Heungryunsa is a temple where people can feel Korean tradition and is well known for the scenery overlooking Incheon Bridge and beautiful setting sun.

40-18, Cheongnyang-ro 70beon-gil, Yeonsu-gu 032)832-1133

History Trail Course		
Distance 4km	Difficulty Middle	Time required 1 hours 20minutes



Neungheodaeji

3

Neungheodae was the first port of entry that opened up a trade route for friendly relations with China, which was once thought of as the entire world. In order to remember and celebrate the historical footsteps of Incheon City, the city designated Neungheodae site as Incheon Metropolitan City Monument No.8 and transformed it into a park.

194-54 Ongnyeon-dong, Yeonsu-gu



Mt. Munhak

4

Mt. Munhak is both a lifeline and source of vitality Yeonsu-gu. The mists of its 2000-year-old history still hover over the long mountain range from East to West as well as above the past and present of Incheon. When you reach the summit of Mt. Munhak, you can enjoy the panoramic scenery of Incheon. The first thing you will see is the sea. The sea that felt so far away is right in front of you. Incheon, viewed from the top of Mt. Munhak, inspires both a sense of magnificence and tranquility.

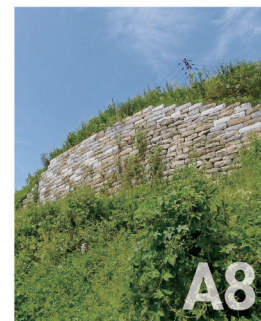
San 59-2 Yeonsu-dong, Yeonsu-gu(the summit of Mt. Munhak)

Munhak mountain fortress

5

It is Incheon Metropolitan City Monument No.1 and a temoe-type (a circular fortress built along a high ridge with the summit in the center) stonewalled fortress originated from the Baekje Kingdom that surrounds the summit of Mt. Munhak that is 213 meters in height. It covers Yeonsu-dong in Yeonsu-gu and Munhakdong and Hakik-dong in Michuhol-gu in Incheon Metropolitan City.

Yeonsu-dong in Yeonsu-gu and Munhak-dong and Hakik-dong in Michuhol-gu in Incheon Metropolitan City





Samhohyeon

6

Samhohyeon is also called Samojigogae or Samhaehyeon. This place was the main traffic route to take the ferry to go to China. It's called Samhohyeon because envoys for China and their family members said good-bye three times there.

② Yeonsu-gu Cheonghak-dong Hill Path

Memorial Stone for Wise Ruling of Hwangooncho

7

At the entrance of Cheonghaksa, there is a memorial stone carved into natural rock that commemorates wise governance. This is a memorial stone commemorating the wise governance of Gangdosamjeol Hwangooncho who governed Incheon two times during the 21st and 23rd year of King Jeongjo during the Joseon Dynasty. He was also famous as a calligrapher and his 2nd memorial stone stands in front of Incheon Hyanggyo.

② On top of Moonhak Tunnel, Halfway to the top of Mt. Yeongyeong



Cheonghaksa Temple

8

Located in the middle of Mt. Munhak, Cheonghaksa boasts a wonderful harmony with the blue mountains and the sky. If you walk in this calm and serene place, you will experience a different kind of emotion in the middle of the city.

② San 16-2, Cheonghak-dong, Yeonsu-gu
② 032)832-2245

Hobulsa Temple

9



Hobulsa was built in the hope that the Buddha's truth and mercy would reach and touch every human being, the sky, and the earth so that they could last for eternity. Situated on the side of Cheonggyecheon, overlooking Songdo Island, and close to Songdo Amusement Park and Neungjudae, it is well loved by Incheon citizens as a great place for family visits.

② 348-196, Ongnyeon-dong, Yeonsu-gu ② 032)834-8904



Well site of Baekje

10

A well served as a place of gathering and communication in a village and became the centerpiece of the lives of the community members. According to the records, there were two wells within the fortress on Mt. Munhak. Therefore, it is believed that this well was used by the common people who lived outside of the fortress. However, some believe that the name, 'Baekje Well,' actually came from Baekje Well, which means a onehundred cubit well.

② 471 Yeonsu-dong, Yeonsu-gu

Mt. Cheong-nyang Observation Platform

11

Cheongryang Mt. surrounds Songdo Amusement Park and is so named because of its scenic mountain views and pure water.

② 57, Cheonghak-dong, Yeonsu-gu
(on the top of Cheongnyang Mt.)



Mural Street of Baekjesashin-gil

12

Two mural streets of 100 meters each of 200 meters are established along Biryu-daero from Samhoheon to Neungheodae to show the journey of envoys of the Baekje Kingdom to China. You can walk through the mural streets and follow the footsteps of the Baekje envoys.

② Pavement in front of the Public Parking Lot, 151-4, 90-5, Cheonghak-dong, Yeonsu-gu

Samhohyun Forest of Traditions

13

This distinctive rest area unique to Yeonsu-gu once served as a travel route for envoys of Baekje and has since been transformed from a quarry site to a traditional forest with a rich historical ambiance.

② Munhaksan Mountain (217-75 Cheonghak-dong)



Museum of Yeonsu-gu

A way to open a bright future with the traces of the past as friends. Today, it is the museum road, where countless people walk on the history. This road retains a clear and clean nature that conveys joy to people.

B6

Incheon Metropolitan City Museum

Incheon Metropolitan City Museum is Korea's first public museum in Korea opened in April 1946. The museum has served its role as a place for rest and education for Incheon citizens. It surveys and researches Incheon's local history and cultural artifacts and operates a diverse range of exhibitions and education programs.

- 26, Cheongnyang-ro 160beongil, Yeonsu-gu 032)440-6750 Free of charge
- 09:00~18:00(Entry closed at 17:30) Every Monday is off(excluding Monday is a public holiday). New Year's Day is off.



Incheon Urban History Museum

Incheon Urban History Museum is the main facility of the 2009 Incheon World Urban Festival, and it shows the past, present and future of Incheon at a glance by applying a global urban marketing concept as a differentiated strategy that distinguishes it from other promotion halls of domestic and overseas cities.

- 238 Incheon tower-daero, Yeonsu-gu 032)850-6000 Free of charge
- 09:00~18:00(Entry closed at 17:30) Every Monday is off(excluding Monday is a public holiday). New Year's Day is off.



Incheon Landing Operation Memorial Hall

It was established in 1984 to commemorate and preserve the historical facts of the Incheon Landing Operation, which served as an opportunity for the salvation of the Korean War. It is a war history memorial hall where you can remember the spirit of veterans who sacrificed to protect liberal democracy and inspire their love for the country.

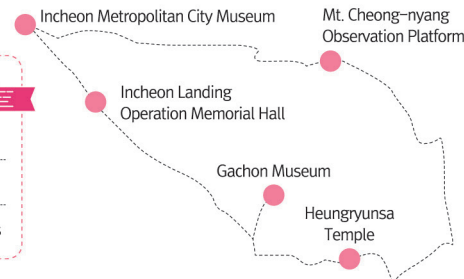
- 138, Cheongnyang-ro, Yeonsu-gu 032)832-0915 Free of charge
- 09:00~18:00(Entry closed at 17:30) Every Monday is off (excluding Monday is a public holiday). New Year's Day, Lunar New Year's Day, and Chuseok are off

Museum Trail Course

Distance 4.2km

Difficulty Middle

Time required 1 hours 40minutes



Gachon Museum

The Gachon Museum opened on October 31, 1995. Dr. Lee Gil-jin, the founder of the museum, runs it to provide the citizens of Incheon with an opportunity to enjoy culture and also inspire dreams and courage in children. It has a vast collection of over 55,000 artifacts and materials, 15 of which are registered as nationally designated cultural assets.

- 40-9, Cheongnyang-ro 102beon-gil, Yeonsu-gu 032)833-4747 Free of charge
- 09:00~17:00(Closed on Mondays, January 1st., Lunar New Year holidays, and Chuseok holidays)

National Museum of World Writing Systems

The National Museum of World Writing Systems gathers and researches important information and new insights from the stories encapsulated in all forms of writing. It presents exhibitions and educational programs grounded on these. This endeavor aims to communicate the historical significance of world writing and provides content for experiencing cultural diversity through writing.

- 217 Centra-ro, Yeonsu-gu



Songdo International City

Songdo International Business District, full of cutting edge, has added romance to make it richer. From housing & industries to cultures & arts, which seem to integrate the world. This place, where you can feel both Eastern and Western cultures, is the future of Korea.



Tri-bowl

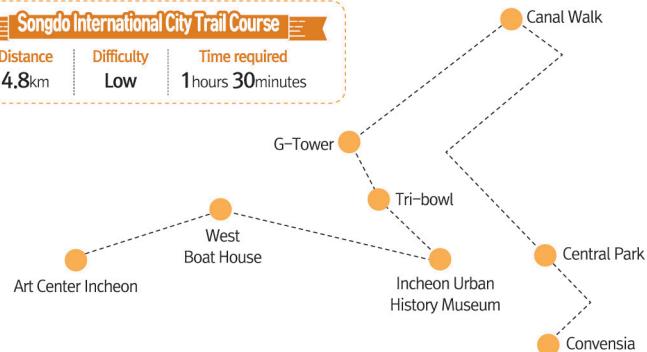
1

Located in Central Park, Tri-bowl is a multicomplex culture and arts center with a roundshaped performance hall as well as facilities for performances, culture, arts, education and displays. It is contributing to enhancing the cultural and arts life of the local community and connects the old downtown and new downtown.

- 250 Incheon tower-daero, Yeonsu-gu
- 032)832-7995

Songdo International City Trail Course

Distance	Difficulty	Time required
4.8km	Low	1 hours 30minutes



G-Tower

3

There are 11 occupants including UN and international organizations and GCF in G-Tower. It has a promotion hall where Yeonsu-gu's past, present, and future are revealed, and a sky garden in which the beautiful scenery of Songdo can be enjoyed at a glance.

- 175, Art center-daero, Yeonsu-gu 032)1330
- Weekdays 10:00~20:00(33rd floor)
- Weekends 10:00~18:00(33rd floor)
- Weekdays 10:00~18:00
- (29th floor, closed on weekends)



West Boat House

2

West Boat House operates this water taxi, which runs every hour on weekdays and every half an hour on holidays. A romantic journey within a city, departing on a cool breeze. Let's sail away from West Boat House.

- 253-34, Incheon tower-daero, Yeonsu-gu
- 032)834-4609
- Adults 4,000 Won / Children 2,000 Won
- Weekdays 10:00~19:00
- Weekends 10:00~21:00

E4



Incheon Global Campus

4

Incheon Global Campus is a global education project promoted by the South Korean government and national project to foster next-generation talents who will lead Korea's education innovation, economy, industry, culture, and arts to become "the best global education hub in Northeast Asia."

- 119, Songdomunhwa-ro, Yeonsu-gu
- 032)626-0114

Incheon Bridge Observatory

5

It is a famous place where you can enjoy the beautiful sunset at the end of Songdo New Town, where you can see the sea. OceanScope, a structure made using container boxes, also won a grand prize at the world-famous Red Dot Design Awards.

- 385-1, Incheon tower-daero, Yeonsu-gu





Convensia

6

Songdo Convensia boasting of excellent accessibility is famous for unique exterior reminiscent of Opera House in Sydney as well as sensible design based on high-class interior, and it also gains popularity as a filming site of various TV broadcasts, performances and fashion shows. Up to 900 booths can be installed in the exhibition hall, and the conference hall can accommodate up to 2,000 persons.

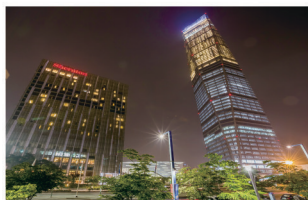
📍 123, Central-ro, Yeonsu-gu 📞 032)210-1114

POSCO Tower

7

With a height of 305m and a floor area of 202,420.15㎡, Northeast Asia Trade Tower, equipped with a business facility hotel, is a landmark of Songdo International City and one of the best known skyscrapers in South Korea as well. It offers the best business services by providing a world-class convention center, hotels and a variety of shopping facilities in a single space.

📍 165 Convensia-daero, Yeonsu-gu



Hanok Village

8

It is a quiet hanok village located in the background of high and dense skyscrapers, and is a unique attraction in the city where you can feel the harmony of modernity and tradition. The village has hotels, restaurants, and cafes, and Songdo Central Park is nearby, so it is good to visit together and relax freely.

📍 180, Techno park-ro, Yeonsu-gu



Art Center Incheon

9

'Art Center Incheon' equipped with a unique exterior inspired from the shape of the hands of a maestro conducting an orchestra, a view linked to the sea, world-class sound system and beautiful inner and outer spaces is well-known as a global cultural complex where high-quality performances are presented.

📍 222, Art center-daero, Yeonsu-gu
📞 032)453-7700



Jack Nicklaus Golf Course

10

It is a global reports space for which Jack Nicklaus, a legendary golf player, took part in designing a golf course for the first time in Asia. UL International Crown, Asia-Pacific Amateur Championship, UL International Crown, The Presidents Cup were held.

📍 209, Academy-ro, Yeonsu-gu



Korea Gas Corporation Gas Science Museum

11

It was established by the Korea Gas Corporation in Incheon Base Headquarters to educate science youth, provide local cultural spaces, and share social roles. The dome-shaped science museum here consists of a basement floor and two ground floors with a conical observatory clean tower.

📍 950, Incheonsinhang-daero, Yeonsu-gu
📞 032)822-4492 🆓 Free of charge
🕒 10:00~17:00 (Closed on Saturdays, Sundays and legal holidays)

Park of Yeonsu-gu

We look around the park in Yeonsu-gu, where people who resemble nature take a rest, a warm healing space full of the bright future of Yeonsu-gu and the freshness of an eco-friendly city, and those who still need rest and leisure.

Central Park

1

Central Park is Korea's first seawater park and an urban park that utilizes Korea's geographic features. The artificial waterway offers water leisure facilities such as water taxis and canoes. The park is a landmark and resting place in Songdo, where you can enjoy various cultures and arts throughout the park.

📍 160, Convensia-daero, Yeonsu-gu
☎ 032)456-2860

Culture Park

2

In Culture Park, located near Yeonsu Station, you can enjoy walking along the forest path or reading in the shade. There is a stage facility where you can enjoy a variety of performances as well as a resting place. In the summer, there are a lot of kids shouting and enjoying themselves in the water due to the opening of the swimming pool.

📍 120, Saemal-ro, Yeonsu-gu ☎ 032)749-8693

Haedoji Park

3

Haedoji Park is a park with Incheon's motif as the city that opened the era of modernization in Korea. It is at the center of informatization in Songdo opening the road to internationalization again after 100 years as the sunrises.

📍 51 Haedoji-ro, Yeonsu-gu, Incheon
☎ 032)456-2860



Michuhol Park

4

Michuhol Park embodies the historical symbolism of the ancient Michuhol Kingdom's Biryu finding myth. Featuring traditional architectures and sculptures, including pavilions and statues of the twelve zodiac animal signs, it is a valuable space where you can feel nature and traditional culture in the city center.

📍 59 Haesong-ro, Yeonsu-gu
☎ 032)456-2860

Dalbit Park

5

Dalbit Park, featuring a golden reed that resembles a subtle moonlight, is a natural ecological park where you can feel the beautiful group dances of birds, the cry of various insects, the cool river breeze, and the smell of grass.

📍 14, Songdo-dong, Yeonsu-gu
☎ 032)456-2860



Moonlight Festival Park

6

It is a park where you can enjoy various festivals, such as the Incheon Pentaport Rock Festival and the Songdo Beer Festival. Please be careful to avoid being confused with Dalbit Park.

📍 350, Central-ro, Yeonsu-gu ☎ 032)456-2860

Solchan Park

7

Solchan Park is a coastal park where you can enjoy the hot sun, the wide sea, and the blue sky. It features the Incheon Bridge production site and windmill toilet.

📍 20, Convensia-daero 391beon-gil, Yeonsu-gu
☎ 032)456-2860



Yeonsu Red Clay Road

8

Yeonsu Red Clay Road is a healing space for locals and a unique walking attraction in Yeonsu-gu. Walking barefoot in a natural and eco-friendly environment greatly contributes to physical and mental health.

📍 Red Clay Road of Yeonsu Dulle-gil
: Seunggicheon Stream, Seonhak-dong
📍 Red Clay Road of Bongjaesan Mountain
: Upper part of Dongchun Tunnel in Bongjaesan Mountain



Festival of Yeonsu-gu

Various festivals in Yeonsu-gu, where traditional style and future passion breathe, are attracting attention and love from many people as a place of communication that both men and women of all ages enjoy as one.



Neungheodae Culture Festival

Neungheodae Culture Festival is held to promote historical significance of Neungheodae, a cultural asset of Incheon Metropolitan City and growing into a feast aimed to suggest a vision for the past, the present and the future of Yeonsu-gu. Diverse performances, exhibitions and experience programs are presented on the theme of Neungheodaeji and folktales.

- 📍 Moonlight Festival Park & Neungheodae Park
- 📅 At the end of September or early October every year
- 🎪 Baekje Sasin Parade, Theme Performance, Comedy of Art, Various Experiences and Events



Pentaport Rock Festival

Pentaport Rock Festival, an Incheon's representative music festival, makes visitors grow restless throughout three days in the sizzling hot summer. It has been held in Songdo in every summer since 2006 when it was held for the first time. Time Out, a U.K. magazine, was selected as one of "The 50 Best Music Festivals in the World." They are all basically standing performances, and visitors are advised proactively to search and join their desired performances by checking out schedules.

- 📍 350, Central-ro, Yeonsu-gu(Moonlight Festival Park)
- 📅 In August every year



Songdo Beer Festival

Starting with 150,000 people attending the first festival in 2011, Songdo World Beer Festival has currently more than 500,000 visitors and is rapidly emerging as one of the representative festivals of South Korea. You can taste delicious beers from all over the world, and you can enjoy a variety of programs and performances every year.

- 📍 350, Central-ro, Yeonsu-gu(Moonlight Festival Park)
- 📅 August ~ September, every year
- 🍺 Global Beer tasting, local and international representative singers' performances

New Songdo Beach Festival

The Songdo Beach Festival offers tourists and locals a chance to enjoy healing and leisure in the city, made possible through programs such as artificial beaches and water activities, showcasing Songdo's symbolic beach.

- 📍 14 Songdo-dong, Yeonsu-gu(Dalbit Park)
- 📅 Held annually in August
- 🏖️ Activities include water play, artificial white sand beach, camping, beach theater, opening performances, and more



Yeonsu Book Festival

The Yeonsu Book Festival is a representative event of the Yeonsu-gu Public Library, which is held to spread the book-reading culture, and anyone can experience reading culture contents. It consists of book concerts, performances, exhibitions, and experience programs related to the theme of the book festival.

- 📍 Venue not determined, yet
- 📅 In October every year

Osibsiyeong

〈Osibsiyeong〉 is a festival full of life in the Food Model Street, Seonhak-dong, meaning "young people, please come to Seonhak-dong food street between five and ten o'clock PM". It is a food festival representing Yeonsu-gu, and started in 2015, promoting the culinary culture in Yeonsu-gu through food competitions and exhibitions.

- 📍 Restaurants in Seon-hak Station
- 📅 May~June, every year



Shopping & Food



SQUARE1

1

Square1, a large, multi-purpose shopping mall in Incheon is a one-stop malling space where the customers may see, feel, eat, enjoy and experience. When you feel like just leave it all behind and take a break, Square1 might be the place for you. Here, you can always expect romance, excitement, and new touching experiences.

📍 210, Cheongneung-daero, Yeonsu-gu
☎️ 032)456-4000 🕒 10:30~22:00



Canal Walk

2

A glamorous street-type shopping mall with stores lined up on both sides along the central waterway of 750m. It is a high-class cultural life space consisting of various sales facilities and neighborhood living facilities, and officetels.

📍 87, Art center-daero, Yeonsu-gu ☎️ 032)831-7101



Hyundai Premium Outlet Songdo

3

Hyundai Premium Outlets Songdo has turned itself into an urban premium outlet. Especially, it has been growing into an outlet shopping landmark representing the capital area thanks to its excellent location and accessibility, and is one of the largest business areas in the western part of the capital area with the largest number of brands and features an excellent premium food mall.

📍 123, Songdogukje-daero, Yeonsu-gu
☎️ 032)727-2233 🕒 10:30~21:00



Triple street

4

Triple-Street, a new street-type complex cultural space, has 'three streets that you want to walk on' based on the concept of creating "a Walking Street representing Korea". Not only overseas famous brands, but also domestic representative brands have entered this location.

📍 33-3, Songdogwahak-ro 16beon-gil, Yeonsu-gu
☎️ 032)310-9400 🕒 10:30~22:00



Sunhak-dong food culture

5

Sunhak-dong Eatery Alley, which recently has become a street full of youth and vitality, stretches over a distance of 595meters. The night atmosphere and scenery is livelier than the daytime, and the lights remain lit up until the dawn to embrace the local workers.

📍 Area of Hangnarae-ro 6, 14, 22, 46, 118beon-gil



Yeonsu-dong Matgoeul-gil(road)

6

The 'Yeonsu-dong Matgoeul-gil(road)', with its distinctive, tasty and safe food, offers a wide variety of delicious dishes such as grilled meats, stews, and sashimi as well as a high-quality food culture.

📍 Area of Saemmal-ro 21, 30, 38, 43, 44beon-gil & Cheongneung-daero 113beon-gil



Songdo Blue crab street

7

It is a street comprising more than 10 restaurants whose main dish is crab tang, stretching from the front of the old Songdo amusement park to the Incheon Landing Operation Memorial. This place is crowded with people who want to taste the seasonal crab dishes between April and June. Thanks to improved storage technology, you can always taste fresh crab full of meat. And also the municipal museum is nearby and this place is popular as a family outing course.

📍 Area of 217, Neungheodaero-ro & 8, Ingwon-ro & Daeam-ro 22beon-gil



Osongdosong Specialized Food Culture Street

8

Osongdong Food Culture Street is a new brand for the street where the restaurants and diners are clustered around the former Songdo Ramada Hotel. It was designated as a specialized food culture street in 2021 to revitalize the original downtown area by setting specialized street brands and establishing excellent food infrastructure to establish the old Songdo regional identity.

📍 Area of Ramada Songdo Hotel including 267, Neungheodaero-ro & 83, 87, Aengogae-ro & Cheongnyang-ro 79beon-gil



Songdo Station Market

9

Ongnyeon Traditional Market

10

Sunhak-dong Eatery Alley, which recently has become a street full of youth and vitality, stretches over a distance of 595meters. The night atmosphere and scenery is livelier than the daytime, and the lights remain lit up until the dawn to embrace the local workers.

📍 Songdo Station Market : Area of 307-1, Ongnyeon-dong, Yeonsu-gu
☎️ 032)832-4288
📍 Ongnyeon Traditional Market : Area of 462-1, Ongnyeon-dong, Yeonsu-gu
☎️ 032)831-8640

Excellent Restaurants in Yeonsu-gu



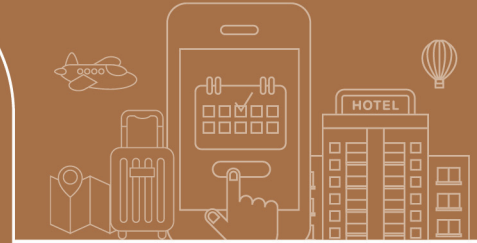
(August 2023, Current)

Business Name	Main Menu	Map	Tel	Location (Road Name)
Ehak	Galbi Naengmyeon (Ribs and Cold Noodles)	C8	032)815-4665	2nd floor, 208 Meonugeum-ro, Yeonsu-gu, Incheon Metropolitan City (Yeonsu-dong)
Gangneung Hoesan Makguksu	Cold Spicy Pollack Buckwheat Noodles	C8	032)812-0021	1st floor, 52 Donggokjae-ro, Yeonsu-gu, Incheon Metropolitan City (Dongchun-dong)
Gyeongbokgung Songdo Branch	Galbi (Ribs)	C6	032)831-7776	1st and 2nd floors, 120 Cheongnyang-ro, Yeonsu-gu, Incheon Metropolitan City (Okryeon-dong)
Gunbong	Braised Aged Kimchi	B6	032)832-3568	1st floor, 13 Biryu-daero 150beon-gil, Yeonsu-gu, Incheon Metropolitan City (Okryeon-dong)
Gulsasang	Oyster Soup and Rice, Seasoned Oyster	D7	032)811-8900	2nd floor, 19-3 Aengogae-ro, 254beon-gil, Yeonsu-gu, Incheon Metropolitan City (Dongchun-dong)
Geumgang Megi Maeuntang	Spicy Catfish Stew, Spicy Mixed Fish Stew	C6	032)833-1191	1st floor, 35 Cheongnyang-ro, 79beon-gil, Yeonsu-gu, Incheon Metropolitan City (Dongchun-dong)
Geumsan Sikdang	Bandengi Seasoned Raw Fish, Spicy Soup	C8	032)818-1893	1st floor, 24-4 Cheongneung-daero, 53beon-gil, Yeonsu-gu, Incheon Metropolitan City (Cheonghak-dong)
Tokyo Hana Songdo Branch	Fresh Raw Fish	E5	032)815-5000	3rd floor, 157 Haedori-ro, Yeonsu-gu, Incheon Metropolitan City (Songdo-dong)
Dongchun Sagol Sundae Guk	Kalguksu (Knife-Cut Noodles), Bossam (Boiled Pork)	C7	032)437-0141	2nd floor, 8 Donggokjae-ro, 49beon-gil, Yeonsu-gu, Incheon Metropolitan City (Dongchun-dong)
La Vista	Steak	C7	032)833-3223	2nd floor, 40-12 Cheongnyang-ro, 70beon-gil, Yeonsu-gu, Incheon Metropolitan City (Dongchun-dong)
Rainbow Chaihong	Jjajangmyeon (Black Bean Noodles), Tangsuyuk (Deep-fried Pork with Sweet and Sour Sauce)	E5	032)858-0111	Rooms M19, 20, and 21, 1st floor, Songdo Convensia, 123 Central-ro, Yeonsu-gu, Incheon Metropolitan City (Songdo-dong)
Mapo Sogeum Gui	Whole Skirt Meat	D8	032)818-3890	1st floor, Building 2, 6 Saemmal-ro, 44beon-gil, Yeonsu-gu, Incheon Metropolitan City (Yeonsu-dong, Matgoeul-gil 11)
Barbecue Gwangjang	Pork Ribs, Hanu Beef	C6	032)832-8888	55 Cheongnyang-ro, Yeonsu-gu, Incheon Metropolitan City (Dongchun-dong)
Bangil Haejangguk	Haejangguk (Hangover Soup)	C8	032)817-5757	1st floor, 12 Cheongneung-daero, 55beon-gil, Yeonsu-gu, Incheon Metropolitan City (Cheonghak-dong)
Baekryeongok	Buckwheat Noodle Soup, Buckwheat Boiled Pork Slices	C6	032)832-9797	1st floor, 15 Solbat-ro, Yeonsu-gu, Incheon Metropolitan City (Dongchun-dong)

Business Name	Main Menu	Map	Tel	Location (Road Name)
Baekam Wang Sundae	Sundae Soup with Rice, Traditional Sundae	C8	032)812-0577	1st floor, 48 Yongdam-ro, Yeonsu-gu, Incheon Metropolitan City (Cheonghak-dong)
Baekam Wang Sundae	Sundae Soup with Rice	C8	032)812-5772	1st floor, 10 Cheongneung-daero, 113beon-gil, Yeonsu-gu, Incheon Metropolitan City (Yeonsu-dong, Neulbom-gil 6)
Baekjewon Songdo Branch	Beef Sirloin	E5	032)831-2222	2nd floor, 157 Haedori-ro, Yeonsu-gu, Incheon Metropolitan City (Songdo-dong)
Shangchai	Jjajangmyeon (Black Bean Noodles), Chili Shrimp	E5	032)831-1477	Rooms 207 and 208, 2nd floor, Building 301, 107 Art Center-daero, Yeonsu-gu, Incheon Metropolitan City (Songdo-dong, Canal Walk D3 Autumn)
Shangchai (Incheon University Branch)	Jjajangmyeon (Black Bean Noodles), Jjampong (Spicy Seafood Noodle Soup), Tangsuyuk (Deep-fried Pork with Sweet and Sour Sauce)	G4	032)832-0071	Faculty Hall, 3rd floor, 119 Academy-ro, Yeonsu-gu, Incheon Metropolitan City (Songdo-dong)
Songdo Jumak	Barley Rice, Steamed Pollack	C6	032)832-5694	1st floor, 36 Cheongnyang-ro 79beon-gil, Yeonsu-gu, Incheon Metropolitan City (Dongchun-dong, Dongchun 1-dong)
Songdo Galmaegi Co., Ltd	Skirt meat	B6	032)831-0010	1st and 2nd floors, 25 Neungheodaero 151beon-gil, Yeonsu-gu, Incheon Metropolitan City (Okryeon-dong)
Songdo Gukje Gyeongyangsik	Sirloin Steak, Pork Cutlet	E5	032)888-8525	Rooms 223, 224, and 225, 2nd Floor, Building C, 194 Central-ro, Yeonsu-gu, Incheon Metropolitan City (Songdo-dong, The Sharp Central Park 2)
Songdo Myeongpum Samgyetang	Samgyetang (Korean Ginseng Chicken Soup)	G5	032)831-0601	Rooms 312, 313, and 314, 3rd Floor, Building 3, BRC Co., Ltd. Research Center, 9 Songdo Mirae-ro, Yeonsu-gu, Incheon Metropolitan City (Songdo-dong)
Songdotgol	Spicy Beef Soup, Boiled Duck Soup	C6	032)814-5292	1st and 2nd floors, 15 Aengogae-ro, 103beon-gil, Yeonsu-gu, Incheon Metropolitan City (Dongchun-dong)
Songjujip	Stir-fried Webfoot Octopus and Pork Belly, Cheese Bomb Stir-Fried Webfoot Octopus	F5	032)833-7892	Rooms 206, 207, and 208, 2nd Floor, 126 Convensia-daero, Yeonsu-gu, Incheon Metropolitan City (Songdo-dong, Songdo Prugio World Mark Complex 8)
Sinchon Seolleongtang Yeonsu Branch	Seolleongtang (Beef Bone Soup), Galbitang (Beef Rib Soup)	C8	032)822-5045	Rooms 116 and 117, 106 Beotkkot-ro, Yeonsu-gu, Incheon Metropolitan City (Cheonghak-dong, Yeonsu Gwangjang Plaza)
Ariarirang	Korean Set Meal	C6	032)833-0505	B1, 1st and 2nd floors, 5 Solbat-ro, Yeonsu-gu, Incheon Metropolitan City (Dongchun-dong)
Abai Wang Sundae	Sundae, Sundae Soup	C8	032)814-8989	1st floor, 11 Cheongmyeong-ro, 3beon-gil, Yeonsu-gu, Incheon Metropolitan City (Cheonghak-dong)
Auraji Megi Maeuntang Yeonsu Branch	Spicy Catfish Stew, Loach Stew	C6	032)833-9701	Rooms 104 and 105, B1 Ju3(sam)-dong, 29 Neungheodaero 267beon-gil, Yeonsu-gu, Incheon Metropolitan City (Dongchun-dong, Ramid Songdo Hotel)
Yeoldubaguni	Cheonggukjang (Rich Soybean Paste) Stew, Soy Sauce Marinated Crab	E6	032)834-4433	Room 201-1, 7 Sinsong-ro 125beon-gil, Yeonsu-gu, Incheon Metropolitan City (Songdo-dong, Iriom Plaza)

Business Name	Main Menu	Map	Tel	Location (Road Name)
Yetgol Namwon Chueotang	Barley Rice, Bossam (Boiled Pork)	C8	032)817-3392	Room 206, 190 Meonugeum-ro, Yeonsu-gu, Incheon Metropolitan City (Yeonsu-dong)
Yennalgeujip	Loach Stew	C6	032)831-3812	1st floor, 44-3 Aengogae-ro 87beon-gil, Dongchun-dong, Yeonsu-gu, Incheon Metropolitan City
Woorine Kodari	Pollack Set Meal	E6	032)834-9098	2nd floor, Rooms 201 and 202, 17 Hamoni-ro 36beon-gil, Yeonsu-gu, Incheon Metropolitan City (Songdo-dong, Eunha Plaza)
Upnan Deungsim	Hanu Beef Sirloin	C6	032)816-7788	B1 and 1st floors, 61 Cheongnyang-ro, Yeonsu-gu, Incheon Metropolitan City (Dongchun-dong)
Bukhangang Jjukkumi	Hanbang Samgyetang (Korean Ginseng Chicken Soup)	B5	032)831-4334	1st and 2nd floors, 16 Dokbae-ro, Yeonsu-gu, Incheon Metropolitan City (Okryeon-dong)
Wolsugeum Tong Dwaaji Kimchijjigae	Pork Belly, Kimchi Stew	E5	032)831-9592	Rooms 179 and 180, Building E, 232 Central-ro, Yeonsu-gu, Incheon Metropolitan City (Songdo-dong, Central Park 1)
Jeollado Samhap	Samhap (Three Dishes - Skate, Pork, and Kimchi Combo), Hongeo Tang (Fermented Skatefish Soup)	C6	032)832-2239	1st floor, 46 Daeam-ro, Yeonsu-gu, Incheon Metropolitan City (Okryeon-dong)
Jeong Yoon-gi Hwangchil Nakji	Yeonpotang (Octopus Soup), Stir-Fried Octopus	C6	032)832-5333	1st floor, 33 Aengogae-ro 87beon-gil, Yeonsu-gu, Incheon Metropolitan City (Dongchun-dong)
Choi Seobangne Ureong Ssambap Daepae Jeongsik	Freshwater Snail, Leaf Wraps and Rice	B6	032)832-1996	1st floor, 84 Hannaru-ro, Yeonsu-gu, Incheon Metropolitan City (Okryeon-dong)
Chuncheon Tobagijip	Samgyetang (Korean Ginseng Chicken Soup), Dakgalbi (Spicy Stir-Fried Chicken)	D7	032)822-7678	Rooms 101 and 102, 10-3 Aengogae-ro 264beon-gil, Yeonsu-gu, Incheon Metropolitan City (Dongchun-dong, Dongseo Building)
Chunhyanggol Namwon Chueotang	Loach Stew, Parboiled Fish	C6	032)834-8336	1st floor, 11 Daeam-ro 22beon-gil, Yeonsu-gu, Incheon Metropolitan City (Okryeon-dong)
Chungnam Seosan Kkotge Jip	Crab Soup, Steamed Crab	C6	032)833-1925	1st floor, 15 Daeam-ro, Yeonsu-gu, Incheon Metropolitan City (Okryeon-dong)
Chungnam Seosan Jip Kkotgetang	Crab Soup, Steamed Crab	C6	032)831-7339	1st floor, 11 Daeam-ro 22beon-gil, Yeonsu-gu, Incheon Metropolitan City (Okryeon-dong)
Pungnyeong Kkotge	Crab Soup	C6	032)831-1764	1st floor, 8 Ingwon-ro, Yeonsu-gu, Incheon Metropolitan City (Okryeon-dong)
Fiesta	Seafood	E6	032)260-0088	21st floor, Building A, 12 Gaebal-ro, Yeonsu-gu, Incheon Metropolitan City (Songdo-dong, Songdo Techno Park Venture)
Haerang	Grilled Fish	E5	070)8631-0102	Room 127, Bldg. 401, 80 Convensia-daero, Yeonsu-gu, Incheon Metropolitan City (Songdo-dong)
Haeanseon	Raw fish, Sliced Raw Fish Set Menu	C8	032)822-8871	Room 202, 2nd floor, 93 Cheongneung-daero, Yeonsu-gu, Incheon Metropolitan City (Cheonghak-dong, 43 Cheongneung-ro)

Accommodations in Yeonsu-gu



(August 2023, Current)

Business Name	Map	Tel	Location (Road Name)
Celeb Stay Songdo	C4	032)713-8540	Halla Western Park Songdo, 100 Art Center-daero 168beon-gil, Yeonsu-gu, Incheon Metropolitan City
Landmark Songdo Stay	C4	032)213-2113	Landmark Prugio City, 101 Art Center-daero 168beon-gil, Yeonsu-gu, Incheon Metropolitan City
The November Stay	D4	032)817-1988	Landmark Prugio City, 101 Art Center-daero 168beon-gil, Yeonsu-gu, Incheon Metropolitan City
Incheon Stay Hotel	C6	032)820-0000	181 Neungheodae-ro, Yeonsu-gu, Incheon Metropolitan City
Blue Hotel	C5	032)832-9494	14 Neungheodae-ro 179beon-gil, Yeonsu-gu, Incheon Metropolitan City (Okryeon-dong)
Hotel me2	C6	032)831-6661	12 Neungheodae-ro 191beon-gil, Yeonsu-gu, Incheon Metropolitan City (Okryeon-dong)
Hotel Cube	C5	032)834-1771	21 Ingwon-ro 9beon-gil, Yeonsu-gu, Incheon Metropolitan City (Okryeon-dong)
Diva Motel	C6	032)833-3124	6 Daeam-ro, Yeonsu-gu, Incheon Metropolitan City (Okryeon-dong)
O2 Hotel	C6	032)859-0300	8 Daeam-ro 8beon-gil, Yeonsu-gu, Incheon Metropolitan City (Okryeon-dong)
ING Hotel	B5	032)834-4567	51 Neungheodae-ro 104beon-gil, Yeonsu-gu, Incheon Metropolitan City (Okryeon-dong)
Hotel Rosee	C6	032)833-3232	32 Neungheodae-ro 191beon-gil, Yeonsu-gu, Incheon Metropolitan City (Okryeon-dong)
Hotel Oslo	B5	032)834-4848	120 Neungheodae-ro, Yeonsu-gu, Incheon Metropolitan City (Okryeon-dong)
Hotel Echae	C6	032)832-4900	35 Daeam-ro, Yeonsu-gu, Incheon Metropolitan City (Okryeon-dong)
Hotel Rio	C6	032)833-7200	16 Ingwon-ro, Yeonsu-gu, Incheon Metropolitan City (Okryeon-dong)
Friends Motel	C6	032)834-3500	31 Daeam-ro, Yeonsu-gu, Incheon Metropolitan City (Okryeon-dong)
Rich Hotel	B5	032)831-2234	124 Neungheodae-ro, Yeonsu-gu, Incheon Metropolitan City (Okryeon-dong)
N*25 Hotel Songdo Branch	C5	032)834-8346	25 Ingwon-ro 9beon-gil, Yeonsu-gu, Incheon Metropolitan City
Ramada Songdo Hotel	C6	032)832-1311	29 Neungheodae-ro 267beon-gil, Yeonsu-gu, Incheon Metropolitan City (Dongchun-dong)
Brown Dot Incheon Songdo	C6	032)833-7117	227-7 Neungheodae-ro, Yeonsu-gu, Incheon Metropolitan City (Okryeon-dong)
Hotel 498	C8	032)899-9300	24 Yongdam-ro 85beon-gil, Yeonsu-gu, Incheon Metropolitan City
Bobos Hotel	B5	032)831-2141	59 Neungheodae-ro 104beon-gil, Yeonsu-gu, Incheon Metropolitan City (Okryeon-dong)
The Stay Songdo	D4	0507)1336-4836	Halla Western Park Songdo, 100 Art Center-daero 168beon-gil, Yeonsu-gu, Incheon Metropolitan City
Urban Stay Songdo Branch	D4	0507)1369-7694	Songdo Landmark Prugio City, 101 Art Center-daero 168beon-gil, Yeonsu-gu, Incheon Metropolitan City
Dalbit Stay	D4	032)833-1650	Halla Western Park Songdo, 100 Art Center-daero 168beon-gil, Yeonsu-gu, Incheon Metropolitan City



the most exciting tour conveniently
connecting various attractions in Incheon!

Incheon City Tour

"Wondering how to plan your itinerary?" If you find yourself contemplating this on every trip and feeling exhausted from a full day of driving and parking, it's time to consider a city tour. Explore, experience, and immerse yourself in Incheon, where the past and future coexist, and tradition harmoniously blends with the present.

Circular Route · Incheon City Tour : 1899-0960

Fare

- ※ Free for children under 5 years old
- ※ There is a discount for guardians accompanying Class 1-3 disabled individuals
- ※ Youth (5 years old to high school students), Senior (65 years and older)
- ※ 20% group discount (for 10 or more people)

Distinction	Adults	Children, Senior / Incheon residents	Disabled, National merit holders
Integrated ticket	12,000 KRW	10,000 KRW	8,000 KRW
Ocean Line	10,000 KRW	8,000 KRW	6,000 KRW
Retro Line	5,000 KRW	4,000 KRW	3,000 KRW

Info

- **Operating Hours** : All year round (Once a week Closed on Mondays and Tuesdays) / Takes about 2 hours and 35 minutes (10:00 to 18:35) / Buses run every hour



Ocean Line

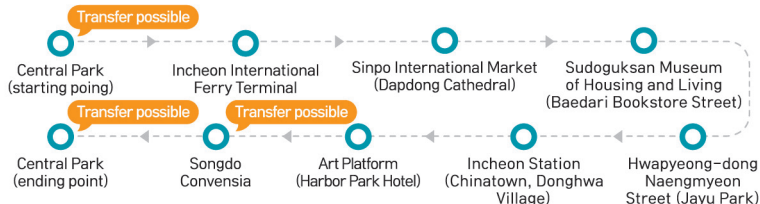


Info

- **Operating Hours** : All year round (Once a week Closed on Mondays and Tuesdays) / Takes about 1 hour and 30 minutes (10:30 to 18:00) / Buses run every hour



Retro Line



Themed Route

· Incheon City Tour : 1899-0960

Fare

- ※ Free for children under 5 years old (1 person per 1 household)
- ※ There is a discount for guardians accompanying Class 1-3 disabled individuals
- ※ Youth (5 years old to high school students), Senior (65 years and older)
- ※ 20% group discount (for 10 or more people)

Adults	Children, Senior / Incheon residents	Disabled, National merit holders
15,000 KRW	12,000 KRW	10,000 KRW

Info

- **Operating Hours** : Once a week (Friday) / Takes about 8 hours (09:30 to 17:30)
- **Boarding location** : Incheon Tourist Information Center (Central Park Station)



Ganghwa Five-sense Tour



Info

- **Operating Hours** : Once a week (Friday) / Takes about 8 hours (09:30 to 17:30)
- **Boarding location** : Incheon Tourist Information Center (Central Park Station)



Seongmodo Island Tour



Info

- **Operating Hours** : Once a week (Saturdays) / Takes about 8 hours (09:30 to 17:30)
- **Boarding location** : Incheon Tourist Information Center (Central Park Station) / Geomam Station



Gyodongdo Island Tour



Fare

- ※ Free for children under 5 years old (1 person per 1 household)
- ※ There is a discount for guardians accompanying Class 1-3 disabled individuals
- ※ Youth (5 years old to high school students), Senior (65 years and older)
- ※ 20% group discount (for 10 or more people)

Adults	Children, Senior / Incheon residents	Disabled, National merit holders
10,000 KRW	8,000 KRW	6,000 KRW

Info

- **Operating Hours** : Once a week (Wednesday) / Takes about 8 hours (09:30 to 17:30)
- **Boarding location** : Incheon Tourist Information Center (Central Park Station)



Seonjae-Yeoungheung Island Tour



Info

- **Operating Hours** : Once a week (Thursday) / Takes about 8 hours (09:30 to 17:30)
- **Boarding location** : Incheon Tourist Information Center (Central Park Station) / Incheon Station



Mueudo Tour Island Tour



Info

- **Operating Hours** : Twice a week (Fridays and Saturdays) / Takes about 2 hours and 30 minutes (Departs at 18:10)
- **Boarding location** : Incheon Tourist Information Center (Central Park Station)



Sunset & Night Tour



Please notice the following list before your trip!

EMERGENCY CONTACT INFORMATION



Agency	Map	Tel	Address
Yeonsu Police Station, Police Civil Call Center (Counseling, report missing)	D8	182	138 Woninjae-ro, Yeonsu-gu
Yeonsu Police Station, Yeonsu District	C7	032)453-0810	11-8 Hambangmoe-ro, Yeonsu-gu
Yeonsu Police Station, Dongchun District	D7	032)453-0820	5Meonugeum-ro 45beon-gil, Yeonsu-gu
Yeonsu Police Station, Songdo International Business District	F6	032)453-0830	96 Haedoji-ro, Yeonsu-gu
Yeonsu Police Station, Songdo International Business District 2	F7	032)453-0840	70Songdogwahak-ro 51beon-gil, Yeonsu-gu
Okryeon Police Station	B6	032)453-0860	215, Biryu-daero, Yeonsu-gu(Okryeon-dong)
Seonhak Police Station	B10	032)453-0850	58, Seonhak-ro, Yeonsu-gu(Seonhak-dong)
Songdo Fire Station	H6	032)810-6691	15, Cheomdandae-ro 60 beon-gi, Yeonsu-gul
Songdo 119 Safety Center	F6	032)831-8119	92 Haedoji-ro, Yeonsu-gu
Dongchun 119 Safety Center	D7	032)813-2119	241 Aenggogae-ro, Yeonsu-gu

※ Crime Report 112, Fire Report 119

+ CONTACT INFORMATION ON HEALTHCARE ORGANIZATIONS



Emergency Medical Consultation,
Medical Clinic and Pharmacy Guide

Medical Clinic·Pharmacy Information
and Emergency Medical Information

Without area code **119**

Emergency Medical Information Center
www.1339.or.kr

• Incheon Nazareth International Hospital Emergency Room •

📍 98 Meonugeum-ro, Yeonsu-gu, Incheon 📞 032)899-9580 📍 D7



INFORMATION ON UTILIZATION OF YEONSU-GU TOUR GUIDE

• Korean Tourism Organization's Tourist Interpreter Line •

- 📞 1330 without any area code anywhere in Korea
- 🕒 24hours a day, 7 days a week

• Incheon Tourist Information Center •

- 📍 234, Incheon tower-daero, Yeonsu-gu 📞 032)832-3031
- 🕒 09:00~18:00 ※ Closed on 1/1, Korean New Year Day and Chuseok

• Incheon Culture and Tourism Commentator •

- 📞 032)440-4105 🌐 <https://culture-tour.incheon.go.kr/>

Incheon Tour Guide

- 📞 032)832-3031 🌐 <http://itour.incheon.go.kr/>

• Incheon International Airport Tourist Information Center •

- 📞 032)743-0011, 0013, 0030
- 🕒 07:00~22:00 Open throughout the year



talking about history and culture in nature ~

Yeonsu-gu Dulle-gil

(trail tour course)

The Yeonsu Dulle-gil is a designed route that connects existing walking and hiking trails, offering an opportunity to delve into history, culture, and ecology. It spans a total of 17.54 kilometers and comprises three distinct sections: Seunggicheon, Munhaksan, and Cheongnyangsan/Bongjaesan. We invite you to take a leisurely stroll along this path and appreciate the natural beauty and cultural richness of Yeonsu District at a slow and relaxed pace.





Yeonsu-gu Tourist Guide Map



Exemplification

- Shopping Mall School Government Office Park
- Tourist Site Mountain Restaurant Temple
- Hotel Police Station Traditional Market Suin Line Subway
- Port Hospital Cultural Facilities Incheon Subway Line No.1
- Yeonsu Dulle-gil (road) (Walking Tour Course in Yeonsu-gu)
- Whole area of Yeonsu-gu

Place of Issue Culture and Sports Department of Yeonsu-gu Office Tel. 032-749-7312
Date of Issue October, 2023
Design Eunjung Design (032-762-9318)
※ Tour Guide Map of Incheon Yeonsu-gu is protected by copyright law and cannot be copied or reproduced without permission.

Yeonsu-gu Tourist Guide Map



Place of Issue Culture and Sports Department of Yeonsu-gu Office

Date of Issue October, 2023

Tel 032-749-7312

Design Eunjung Design(032-762-9318)